



ALLSOP PLACE

LONDON, NW1

£2,950 PER MONTH

PMP International are proud to offer this large two bedroom apartment located in a luxury portered block in the heart of Baker Street.

This immaculate apartment features two large sized bedrooms, living area with dining room, stunning kitchen, bathroom and separate WC.

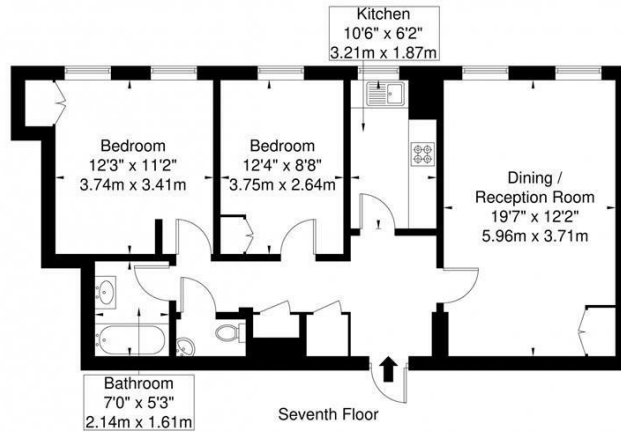
Ideally situated in a secure block moments from Baker Street Underground Station, with convenient access to Regents Park, University of Westminster, and London's West End.

Viewings recommended.

PMP | INTERNATIONAL

Farley, Allsop Place, NW1

Approx. Gross Internal Area = 74 sq m / 796 sq ft



Ref

Copyright **BLEU PLAN**

The Floor plan is not to scale and measurements and areas shown are approximate and therefore should be used for illustrative purposes only. The plan has been prepared in accordance with the RICS code of Measuring Practice and whilst we have confidence in the information produced it must not be relied on. If there is any aspect of particular importance, you should carry out or commission your own inspection of the property.
Copyright © BLEUPLAN



Energy Efficiency Rating		Current	Potential
Very energy efficient - lower running costs			
(92 plus) A			
(81-91) B			
(69-80) C		77	80
(55-68) D			
(39-54) E			
(21-38) F			
(1-20) G			
Not energy efficient - higher running costs			
England & Wales		EU Directive 2002/91/EC	

Agents Note: Whilst every care has been taken to prepare these particulars, they are for guidance purposes only. All measurements are approximate and are for general guidance purposes only and whilst every care has been taken to ensure their accuracy, they should not be relied upon and potential buyers/tenants are advised to recheck the measurements

London
PMP International
94 Belsize Lane
Belsize Park
London
NW3 5BE

020 7701 2878
info@pmpi.co.uk
www.pmpi.co.uk

PMP | INTERNATIONAL